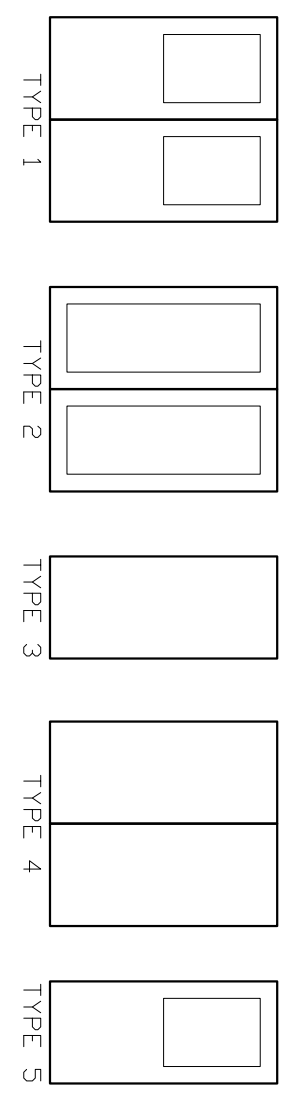


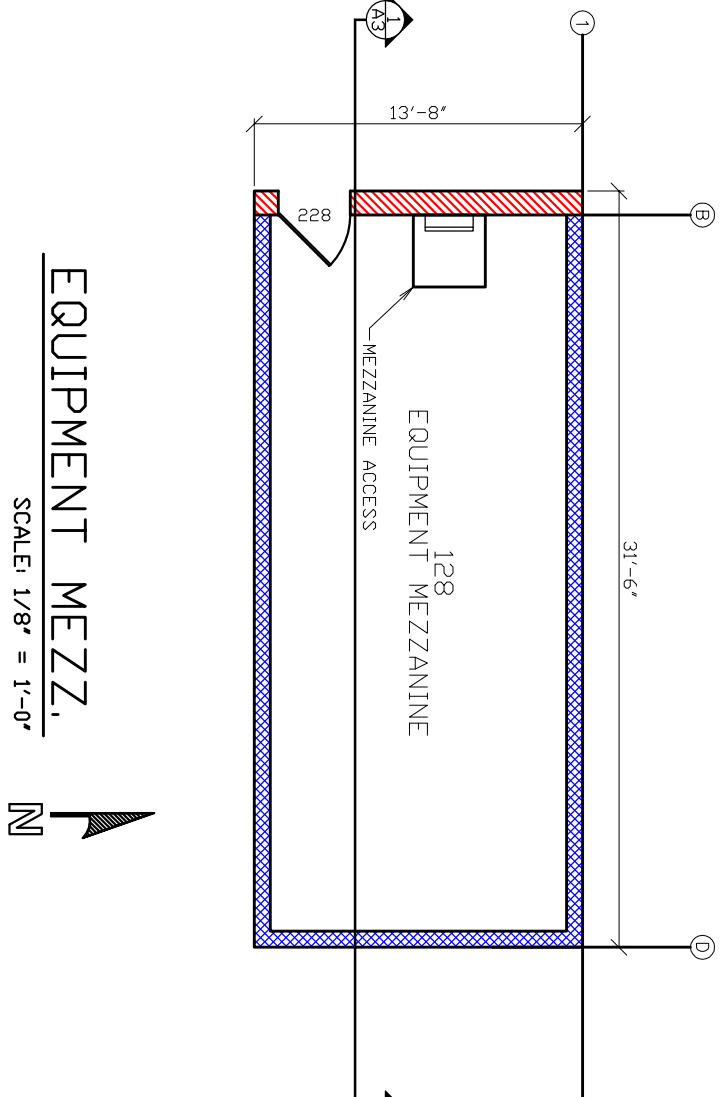
FLOOR PLAN
SCALE 1/8" = 1'-0"



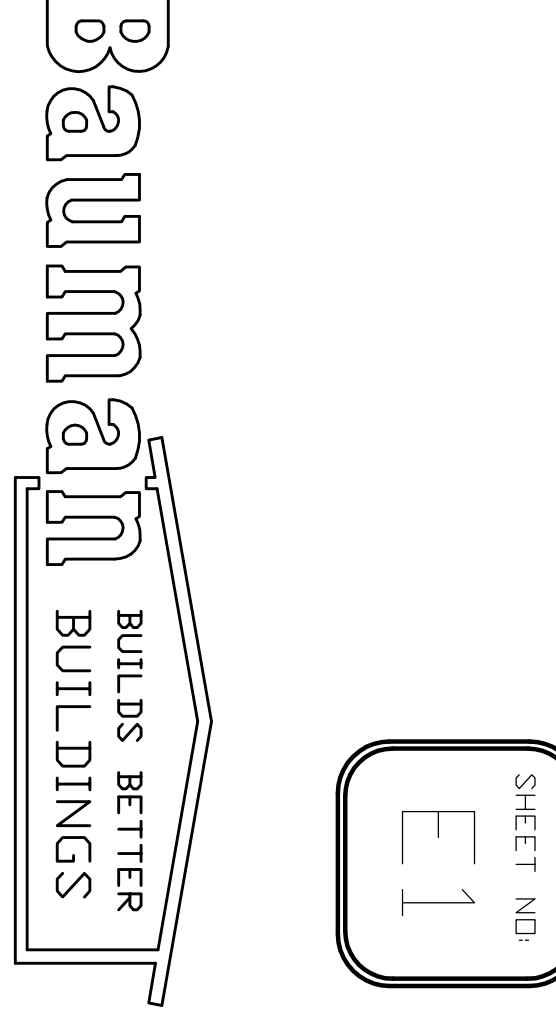
NO.	TYPE	LOCATION	REMARKS
1	TYPE 1	101	OFFICE
2	TYPE 1	102	OFFICE
3	TYPE 1	103	OFFICE
4	TYPE 1	104	OFFICE
5	TYPE 1	105	OFFICE
6	TYPE 1	106	OFFICE
7	TYPE 1	107	OFFICE
8	TYPE 1	108	OFFICE
9	TYPE 1	109	OFFICE
10	TYPE 1	110	OFFICE
11	TYPE 1	111	OFFICE
12	TYPE 1	112	OFFICE
13	TYPE 1	113	OFFICE
14	TYPE 1	114	OFFICE
15	TYPE 1	115	OFFICE
16	TYPE 1	116	OFFICE
17	TYPE 1	117	OFFICE
18	TYPE 1	118	OFFICE
19	TYPE 1	119	OFFICE
20	TYPE 1	120	OFFICE
21	TYPE 1	121	OFFICE
22	TYPE 1	122	OFFICE
23	TYPE 1	123	OFFICE
24	TYPE 1	124	OFFICE
25	TYPE 1	125	OFFICE
26	TYPE 1	126	OFFICE
27	TYPE 1	127	OFFICE
28	TYPE 1	128	OFFICE
29	TYPE 1	129	OFFICE
30	TYPE 1	130	OFFICE
31	TYPE 1	131	OFFICE
32	TYPE 1	132	OFFICE
33	TYPE 1	133	OFFICE
34	TYPE 1	134	OFFICE
35	TYPE 1	135	OFFICE
36	TYPE 1	136	OFFICE
37	TYPE 1	137	OFFICE
38	TYPE 1	138	OFFICE
39	TYPE 1	139	OFFICE
40	TYPE 1	140	OFFICE
41	TYPE 1	141	OFFICE
42	TYPE 1	142	OFFICE
43	TYPE 1	143	OFFICE
44	TYPE 1	144	OFFICE
45	TYPE 1	145	OFFICE
46	TYPE 1	146	OFFICE
47	TYPE 1	147	OFFICE
48	TYPE 1	148	OFFICE
49	TYPE 1	149	OFFICE
50	TYPE 1	150	OFFICE

NO.	TYPE	LOCATION	REMARKS
1	TYPE 1	101	OFFICE
2	TYPE 1	102	OFFICE
3	TYPE 1	103	OFFICE
4	TYPE 1	104	OFFICE
5	TYPE 1	105	OFFICE
6	TYPE 1	106	OFFICE
7	TYPE 1	107	OFFICE
8	TYPE 1	108	OFFICE
9	TYPE 1	109	OFFICE
10	TYPE 1	110	OFFICE
11	TYPE 1	111	OFFICE
12	TYPE 1	112	OFFICE
13	TYPE 1	113	OFFICE
14	TYPE 1	114	OFFICE
15	TYPE 1	115	OFFICE
16	TYPE 1	116	OFFICE
17	TYPE 1	117	OFFICE
18	TYPE 1	118	OFFICE
19	TYPE 1	119	OFFICE
20	TYPE 1	120	OFFICE
21	TYPE 1	121	OFFICE
22	TYPE 1	122	OFFICE
23	TYPE 1	123	OFFICE
24	TYPE 1	124	OFFICE
25	TYPE 1	125	OFFICE
26	TYPE 1	126	OFFICE
27	TYPE 1	127	OFFICE
28	TYPE 1	128	OFFICE
29	TYPE 1	129	OFFICE
30	TYPE 1	130	OFFICE
31	TYPE 1	131	OFFICE
32	TYPE 1	132	OFFICE
33	TYPE 1	133	OFFICE
34	TYPE 1	134	OFFICE
35	TYPE 1	135	OFFICE
36	TYPE 1	136	OFFICE
37	TYPE 1	137	OFFICE
38	TYPE 1	138	OFFICE
39	TYPE 1	139	OFFICE
40	TYPE 1	140	OFFICE
41	TYPE 1	141	OFFICE
42	TYPE 1	142	OFFICE
43	TYPE 1	143	OFFICE
44	TYPE 1	144	OFFICE
45	TYPE 1	145	OFFICE
46	TYPE 1	146	OFFICE
47	TYPE 1	147	OFFICE
48	TYPE 1	148	OFFICE
49	TYPE 1	149	OFFICE
50	TYPE 1	150	OFFICE

NO.	TYPE	LOCATION	REMARKS
1	TYPE 1	101	OFFICE
2	TYPE 1	102	OFFICE
3	TYPE 1	103	OFFICE
4	TYPE 1	104	OFFICE
5	TYPE 1	105	OFFICE
6	TYPE 1	106	OFFICE
7	TYPE 1	107	OFFICE
8	TYPE 1	108	OFFICE
9	TYPE 1	109	OFFICE
10	TYPE 1	110	OFFICE
11	TYPE 1	111	OFFICE
12	TYPE 1	112	OFFICE
13	TYPE 1	113	OFFICE
14	TYPE 1	114	OFFICE
15	TYPE 1	115	OFFICE
16	TYPE 1	116	OFFICE
17	TYPE 1	117	OFFICE
18	TYPE 1	118	OFFICE
19	TYPE 1	119	OFFICE
20	TYPE 1	120	OFFICE
21	TYPE 1	121	OFFICE
22	TYPE 1	122	OFFICE
23	TYPE 1	123	OFFICE
24	TYPE 1	124	OFFICE
25	TYPE 1	125	OFFICE
26	TYPE 1	126	OFFICE
27	TYPE 1	127	OFFICE
28	TYPE 1	128	OFFICE
29	TYPE 1	129	OFFICE
30	TYPE 1	130	OFFICE
31	TYPE 1	131	OFFICE
32	TYPE 1	132	OFFICE
33	TYPE 1	133	OFFICE
34	TYPE 1	134	OFFICE
35	TYPE 1	135	OFFICE
36	TYPE 1	136	OFFICE
37	TYPE 1	137	OFFICE
38	TYPE 1	138	OFFICE
39	TYPE 1	139	OFFICE
40	TYPE 1	140	OFFICE
41	TYPE 1	141	OFFICE
42	TYPE 1	142	OFFICE
43	TYPE 1	143	OFFICE
44	TYPE 1	144	OFFICE
45	TYPE 1	145	OFFICE
46	TYPE 1	146	OFFICE
47	TYPE 1	147	OFFICE
48	TYPE 1	148	OFFICE
49	TYPE 1	149	OFFICE
50	TYPE 1	150	OFFICE



EQUIPMENT MEZZ
SCALE 1/8" = 1'-0"



#0904201 BLOOMER AREA AQUATIC & RECREATION CENTER
LOCATION: BLOOMER, WI

BAUMAIN CONSTRUCTION OF CHIPPEWA FALLS INC.
3644 185TH STREET CHIPPEWA FALLS, WI 54749 PHONE: 715-725-2307
WWW.BAUMAINCONSTRUCTION.COM FAX: 715-725-2308
COMMERCIAL • INDUSTRIAL • RESIDENTIAL
THIS DRAWING SHALL NOT BE COPIED OR SUBMITTED TO OTHERS WITHOUT CONSENT OF THIS COMPANY.

NO.	DATE	COMMENTS	DRAWN BY
1	04-17-08	ORIGINAL DRAWING VERSION	JP
2	04-24-08	ADDED OFFICE & ANTER ROOM, ADDED INTERIOR COLUMN IN PARTS VANDERKAM	JP
3	04-29-08	REVISED PER 4/29/08 MEETING NOTES	JP
4	05-16-08	ADDED WINDOW IN OFFICE & REMOVED FIRE WALL	JP
5	07-29-08	REMOVED INTERIOR BOLLARDS & CHANGED ENTRY WINDOW SIZES	JP
6	12-16-08	REVISED LIGHTING LAYOUT PER MARKED UP PLAN FROM BOB THYAN	JP

SHEET NO
E1